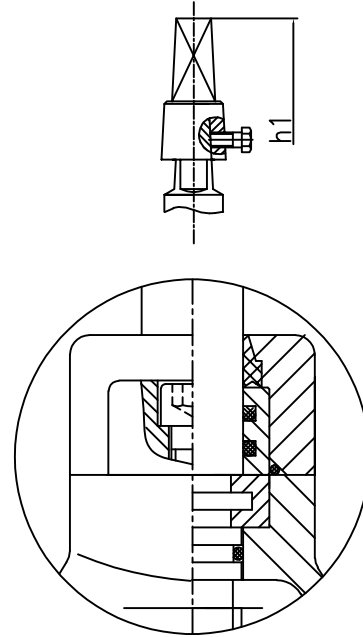
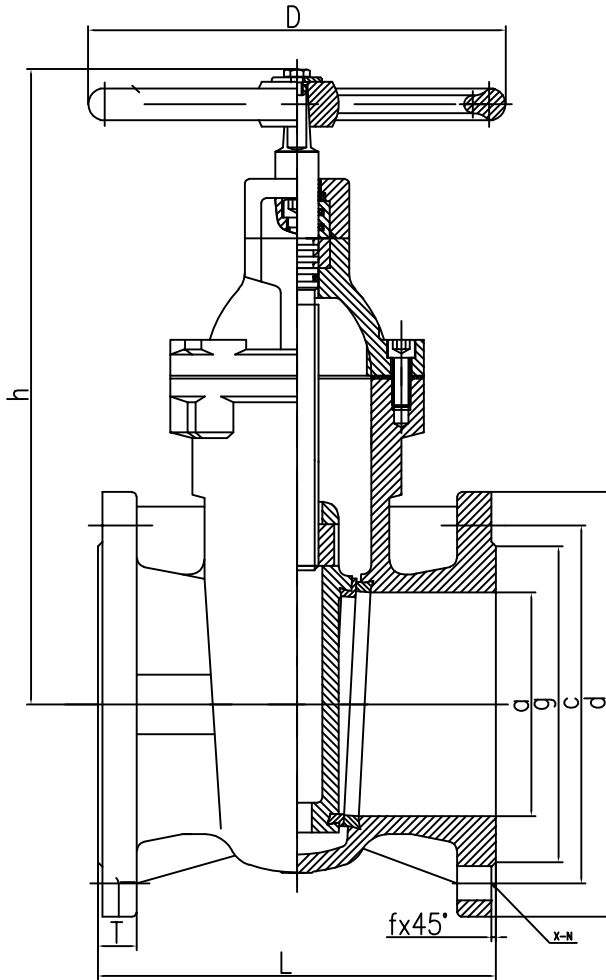


## SPECIFICATIONS

Size	DN 50 - 300
Class	PN 10 - PN 16
Design	BS 5163
Face to Face	BS 5163 / ISO 5752 3 Series
End Flange	BS 4504 / BS EN 1092
Test	BS 5163, EN12266-1 Rating A

## STANDARD MATERIALS OF MAIN PARTS

ITEM	PART NAME	MATERIAL
1	Body	Ductile Iron EN GJS 500-7
2	Wedge	Ductile Iron EN GJS 500-7
3	Bonnet	Ductile Iron EN GJS 500-7
4	Stem	Stainless Steel SS420
5	Stem Nut	Brass
6	Holding Ring	Brass
7	Sealing Ring	Brass
8	Body Ring	Bronze Gun Metal BS1400 LG2
9	Wedge Ring	Bronze Gun Metal BS1400 LG2
10	Gland	Ductile Iron EN GJS 500-7
11	Handwheel	Ductile Iron EN GJS 500-7
12	Bonnet Gasket	EPDM
13	O Ring	NBR
14	Dust Ring	NBR
15	BoIt	Stainless Steel SS304



## DIMENSIONS

DN	OUTLINE mm				END FLANGE BS PN10/16 mm								Torque (N.m)	
	L	h	D	h1	a	d	c	x-n		T	g	f		
50	178	260	180	330	50	165	125	4- $\phi$ 19		19	99	3	50	
65	190	285	180	355	65	185	145	4- $\phi$ 19		19	118	3	65	
80	203	335	205	405	80	200	160	8- $\phi$ 19		19	132	3	80	
100	229	365	240	435	100	220	180	8- $\phi$ 19		19	156	3	100	
125	254	420	240	490	125	250	210	8- $\phi$ 19		19	184	3	125	
150	267	480	280	550	150	285	240	8- $\phi$ 23		19	211	3	150	
200	292	570	320	640	200	340	295	8- $\phi$ 23	12- $\phi$ 23	20	266	3	200	
250	330	670	360	740	250	405	350	355	12- $\phi$ 23	12- $\phi$ 28	22	319	3	250
300	356	775	450	845	300	460	400	410	12- $\phi$ 23	12- $\phi$ 28	24.5	370	4	300